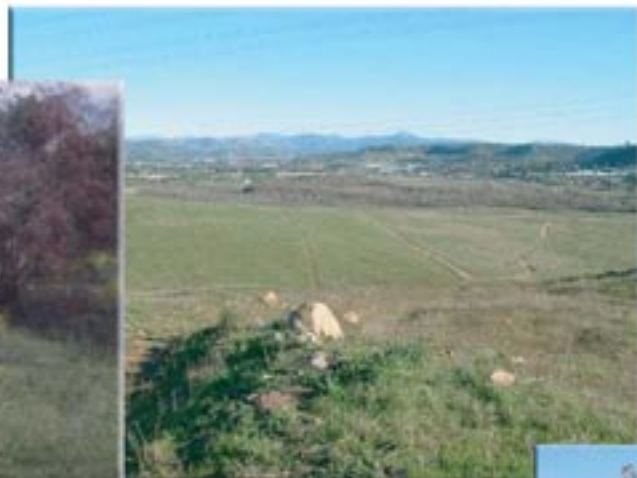
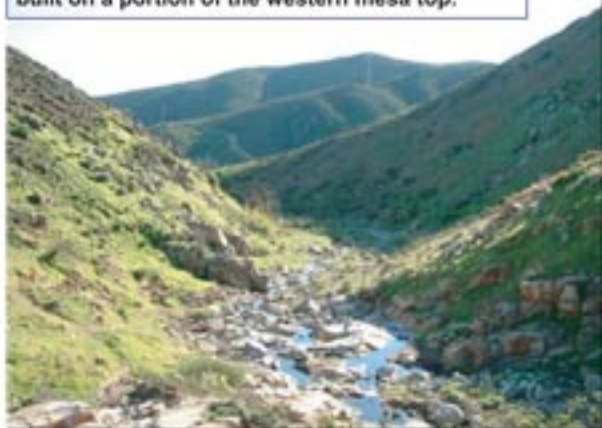


POST-CLOSURE DEVELOPMENT AT TIERRASANTA AND MISSION TRAILS REGIONAL PARK

Following the closure of Camp Elliott, the property not incorporated into MCAS Miramar was disposed by the GSA through land exchanges, grants, and sales. A large block annexed by the City of San Diego became Mission Trails Regional Park. Other parcels were acquired by the San Diego Unified School District and private parties. Developers established the community of Tierrasanta, and the Murphy Canyon Naval housing complex was built on a portion of the western mesa top.



KEY EVENTS-MISSION TRAILS

- 1960s: The City of San Diego acquires portions of the Camp Elliott property for uses including schools and a regional park
- 1974: The Mission Trails Regional Park is established on land acquired by the City of San Diego. MTRP opens in 1978 as one of the largest urban parks in the United States.
- 1995: The MTRP Visitor and Interpretive Center opens.



KEY EVENTS-TIERRASANTA

- 1960s: The City of San Diego and the San Diego Unified School District acquire portions of the former Camp Elliott property.
- 1960s: Christiana Development acquires a portion of the former Camp Elliott property and begins development of the Tierrasanta community.
- 1970s: The Murphy Canyon Naval housing complex is built.
- 1983: Two boys are killed after discovering unexploded ordnance.

